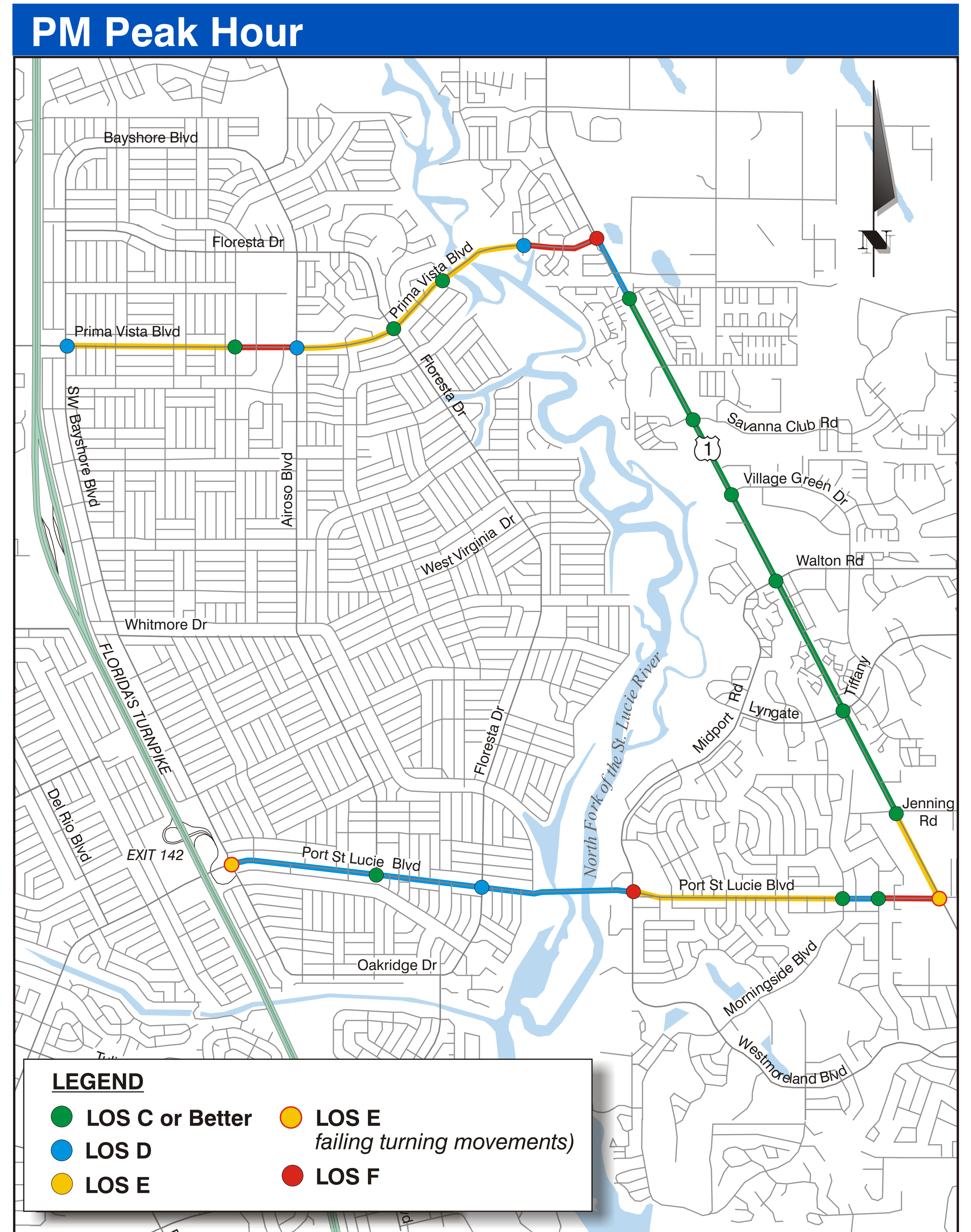
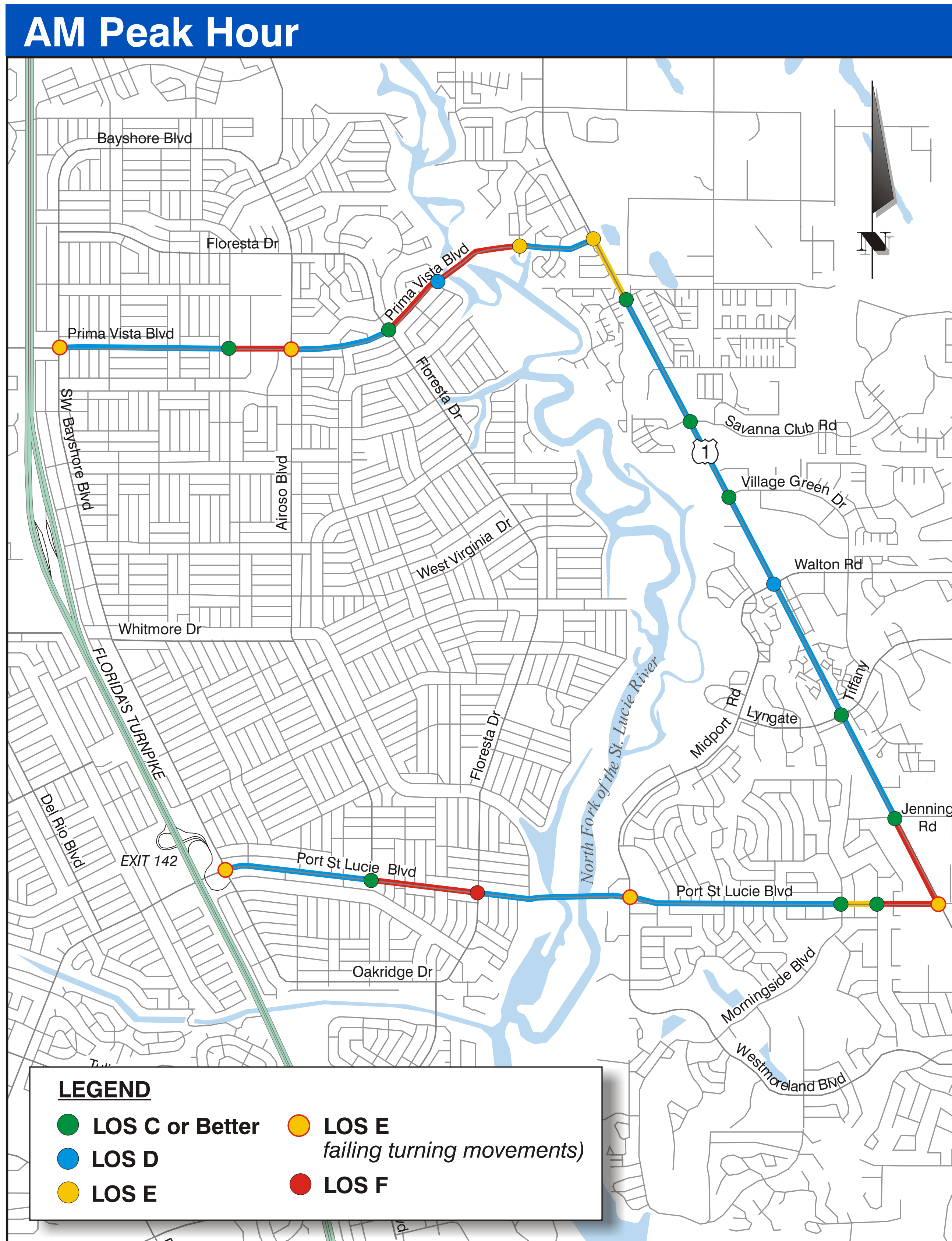


Year 2003 Corridor Analysis



- Significant congestion and delays at critical segments
- The potential for traffic redistribution to less congested roadways is limited

LOS: Level of Service is a term used to describe the operating conditions of a roadway based on factors such as speed, travel time, maneuverability, delay and safety. LOS ranges from A to F, with A representing the best operating conditions and F the worst.

Year 2003 Traffic Conditions

| Bridges | Daily | | Peak Hour | | |
|---------------------|--------|--------|-----------|-------|-------|
| | MSV | Daily | MSV | AM | PM |
| Prima Vista Blvd | 35,700 | 32,500 | 1,860 | 1,520 | 1,720 |
| Port St. Lucie Blvd | 53,500 | 59,000 | 2,790 | 3,250 | 2,920 |
| Combined | 89,200 | 91,500 | 4,650 | 4,770 | 4,650 |

MSV: Maximum Service Volume

XX: Exceeds MSV

MSV: Maximum Service Volume is the volume of traffic that the roadway can comfortably carry with minimum delays.