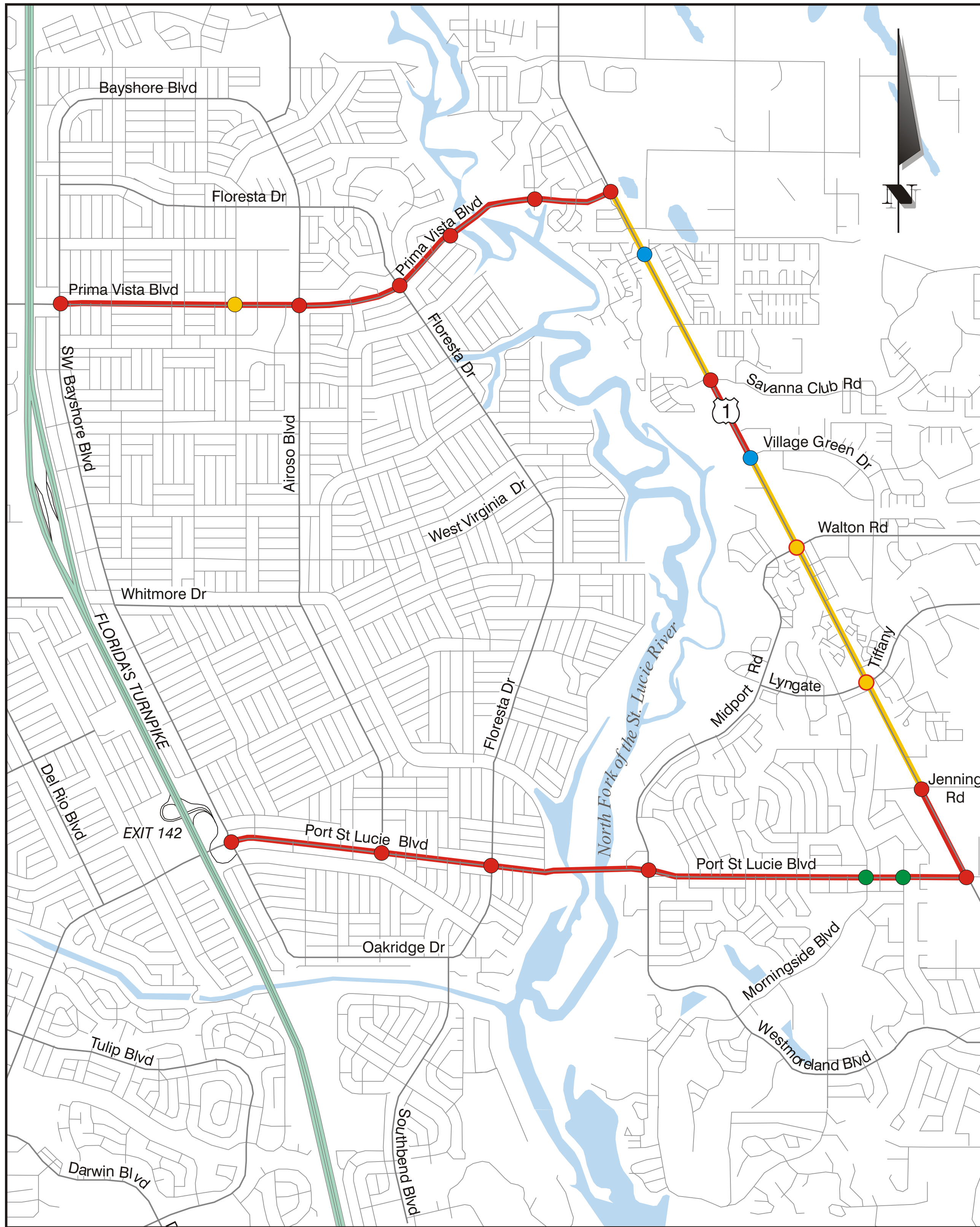


Traffic Study - No Build



Year 2024 Peak Hour Arterial Analysis



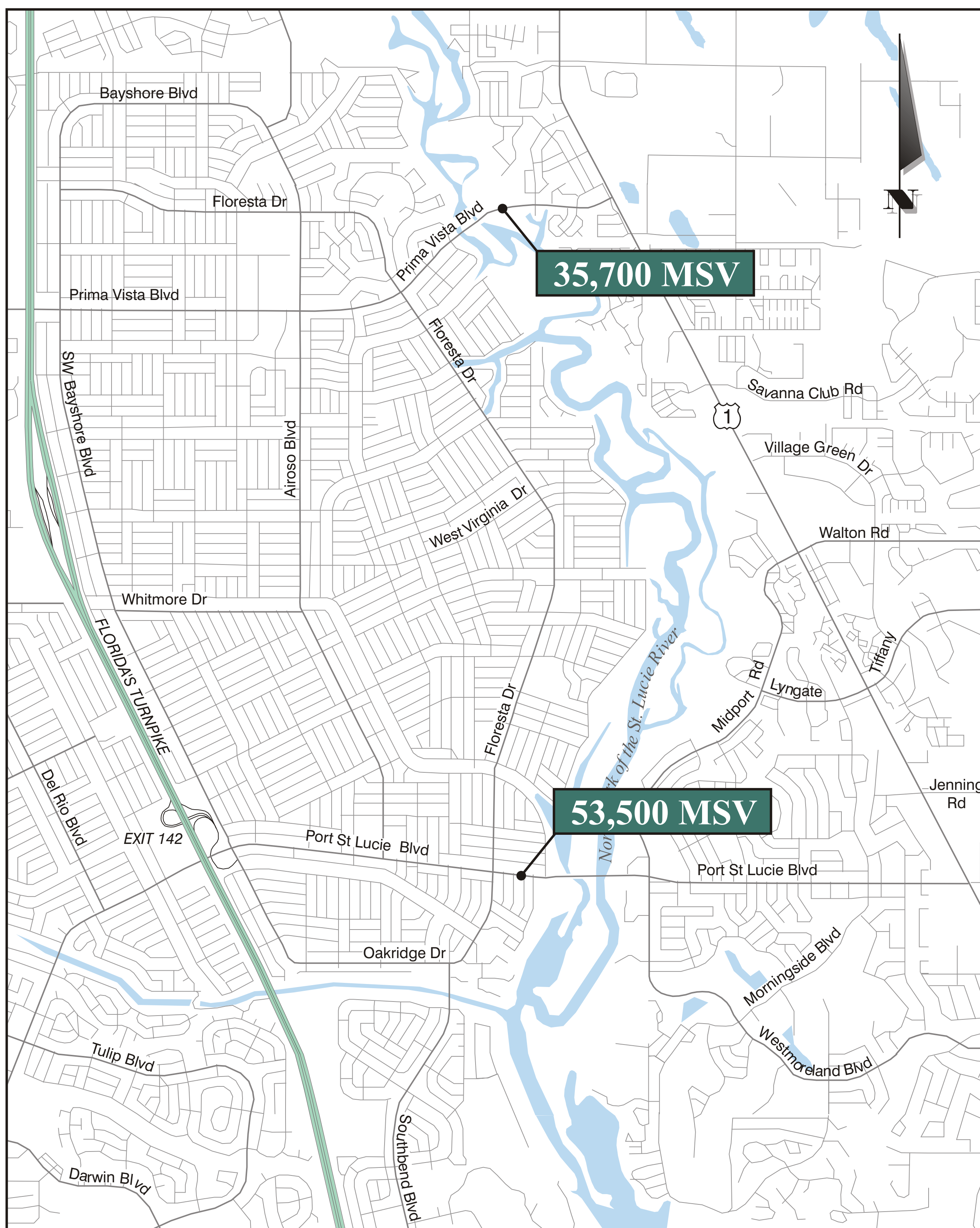
LEGEND

- LOS C or Better
- LOS D
- LOS E
- LOS E (with significant failing turning movements)
- LOS F

LOS: Level of Service is a term used to describe the operating conditions of a roadway based on factors such as speed, travel time, maneuverability, delay and safety. LOS ranges from A to F, with A representing the best operating conditions and F the worst.

- **No Build alternative is constrained and therefore the actual demand is greater than shown.**

Daily Traffic Projections



Prima Vista Boulevard

2003	32,500
2014	42,200
2024	44,000
2034	46,700

Port St. Lucie Blvd

2003	59,000
2014	56,300
2024	62,800
2034	69,400

MSV: Maximum Service Volume
XX: Exceeds MSV

MSV: Maximum Service Volume is the volume of traffic that the roadway can comfortably carry with minimum delays.